

**FLEXBOX**

**HUMBAUR**  
MAKES IT HAPPEN



**ANycARGO HUMBAUR ONESOLUTION**

Our  
**BOX BODIES**



[humbaур.com](http://humbaур.com)

# DRY FREIGHT BOX BODIES

The Humbaer FlexBox DRY is impressive thanks to well thought-out detail solutions, versatile application options and its far-reaching flexibility. The extremely light box bodies stand out due to an unbeatable payload advantage. The HUMBAUR FlexBox is therefore the perfect partner for any transportation needs, regardless of whether it's general cargo, roll containers or packages.

FlexBox DRY can optionally be equipped with a variety of accessories. What's more, it is available in a lightweight version with an aluminium sub-frame and sandwich panels with GFRP outer layer. Even a light commercial vehicle can be a payload heavyweight.

Lighting as per German Road Traffic Regulations (StVZO)



Lashing points in a groove

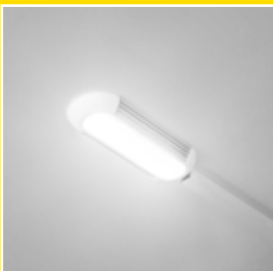


Single-piece floor panels in a range of thicknesses prevent height differences when joining different thicknesses. (Only up to a GVW of 3.5 t & not possible for all special sizes)

Humbaer recommendation:

**SCREEN-PRINTED FLOOR**

- 15 mm** up to 3.5 t
- 18 mm** 3.5–7.5 t
- 21 mm** 7.5–12 t
- 24 mm** 14 t and up



Interior lighting



Handgrip and step as a climbing aid

Double-wing door with stainless steel hinges & espagnolette lock



**FLEXBOX HGV box bodies**

The HUMBAUR FlexBox DRY is the perfect partner for all transport requirements — including in the truck sector — regardless of whether you're transporting general cargo, roll containers or packages. It impresses thanks to well thought-out detail solutions, versatile application options and its far-reaching flexibility. The extremely robust box bodies impress with unbeatable resilience and longevity.

Rear portal welded & hot-dip galvanised



Frame profiles made of anodised aluminium

30-mm sandwich panels

Side marker lights for vehicles that are 6 m+ long

Sub-frame hot-dip galvanised

Plastic mudguards including splash flaps



The FLEXBOX box bodies are tested by TÜV NORD in accordance with Code XL.

**STANDARD EQUIPMENT**

30-mm sandwich panels
Insulated roof fitted as standard
Double-wing rear doors
Rear portal and sub-frame hot-dip galvanised
LED interior lighting with motion detector
Adjustable lashing points on the floor
Step with handgrip at the rear
Plastic mudguards with dirt collectors
Lighting as per German Road Traffic Regulations (StVZO)

**PUR FERRO**

**13 kg/m<sup>2</sup>**

**PUR ALU**

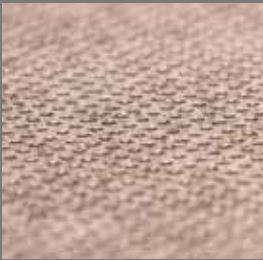
**7 kg/m<sup>2</sup>**

**PUR LIGHT**

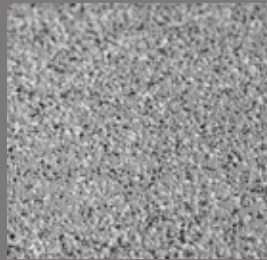
**4 kg/m<sup>2</sup>**      Only up to 7.5 t

# OUR RANGE OF ACCESSORIES

## FLOOR



Wooden floor 15/18/21/24/27 mm



Plastic-coated floor

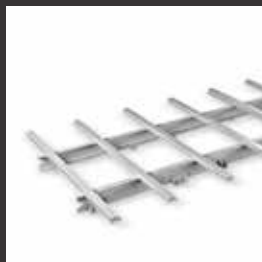
## EQUIPMENT



GFRP skylight



Roof spoiler



Bolted aluminium sub-frame



Side doors with step



Rubber buffer



Scuff plate 150/300 mm



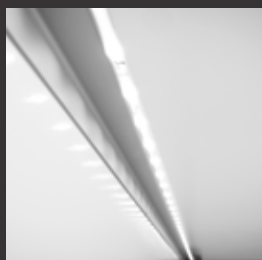
Side impact protection



Monitor for the reversing camera in the cab



Third brake light with integrated reversing camera



LED strips in the interior



Rear step



In addition to the **extensive standard equipment** for our trailers and vehicle bodies, we offer a **wide selection of accessories to suit each model**. This means that you can configure just the right solution for your transport needs according to your **individual requirements** and you can grow alongside your transport requirements.



Liftgate with top tailgate  
(different manufacturers)



Barred tie-rail



Front wall reinforcement



#### TIP

The HUMBAUR FlexBox as a through-loading trailer enables drivers with driving license class "B" and "BE" to drive trains with a permissible maximum weight of up to 7 tonnes to be controlled.



Slotted tie-rail



Locking bar



Airline rail

## BREAKDOWN SERVICE

A breakdown may result in severe consequences for your business. That's why it's important that your vehicles are back in action quickly in the event of a problem and keep your business moving. With Humba 24/7, not only do you quickly receive roadside assistance, you also benefit from comprehensive coverage against unexpected costs.

- 800 workshops throughout Germany
- 5500 workshops in Europe
- 24-hour service, 365 days a year
- We repair over 97% of all breakdowns on site
- Attractive price/performance ratio
- Special terms on tyre costs in the event of a breakdown
- Over 90% customer satisfaction

## HUMBAUR 24/7





# ANYCARGO HUMB





MAKES IT HAPPEN

# AUR ONESOLUTION



# COOL/FREEZE BOX BODIES

Whether its fresh or frozen goods, the FlexBox COOL AND FREEZE offers the right solution for every type of sensitive cargo. To protect the front and side walls, a 150-mm-high aluminium scuff plate is installed in the interior.

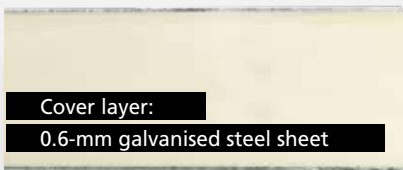
As a result, the Humbaур FlexBox COOL and FREEZE is ready for transporting chilled and frozen goods and is therefore the ideal partner for any temperature-controlled transportation needs, regardless of whether it's roll containers, E2 crates or pallets.

Weight-optimised variants are also available for the FlexBox COOL and FREEZE so as to achieve a maximum payload.

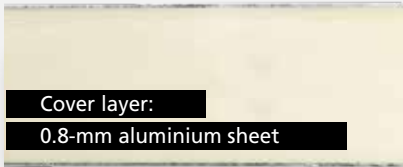
Of course, the FlexBoxes from this series are tested and certified according to HACCP & ATP standards. In addition, the FlexBox COOL and FREEZE can optionally be equipped with a wide range of accessories.



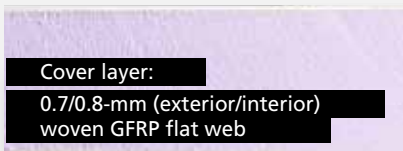
## PUR FERRO



## PUR ALU



## PUR LIGHT



### STANDARD EQUIPMENT COOL

- 60-mm sandwich panels
- 65-mm insulated floor
- Double-wing rear doors
- Sub-frame hot-dip galvanised, rear portal made from stainless steel
- LED interior lighting with motion detector
- Step with handgrip at the rear
- Plastic mudguards with dirt collectors
- Lighting as per German Road Traffic Regulations (StVZO)

**Units from Carrier, Mitsubishi and Thermo King**

### STANDARD EQUIPMENT FREEZE

- 80-mm front wall and roof
- 65-mm side wall panels
- 120-mm insulated floor
- 85-mm double-hinge rear doors
- Sub-frame hot-dip galvanised, rear portal made from stainless steel
- LED interior lighting with motion detector
- Step with handgrip at the rear
- Plastic mudguards with dirt collectors
- Lighting as per German Road Traffic Regulations (StVZO)

**Units from Carrier, Mitsubishi and Thermo King**





The FLEXBOX box bodies are certified in accordance with the rules of ATP and HACCP.



Double-wing doors including espagnolette lock on both doors



150-mm scuff plate



Insulated floor including anti-slip coating



Interior lighting

### FLEXBOX HGV box bodies

The Humbaure FlexBox COOL and FREEZE is ready for transporting chilled and frozen goods and is therefore the ideal partner for all temperature-controlled transportation needs, regardless of whether it's roll containers, E2 crates or pallet goods.

To protect the front and side walls, a 150-mm-high aluminium scuff plate is installed in the interior. The FlexBox COOL and FREEZE is available in weight-optimised versions for maximum payload.

A multi-chamber solution with different temperature zones in a single vehicle is also possible with FlexBox FREEZE.



# OUR RANGE OF ACCESSORIES

## FLOOR



Barley grain aluminium floor



LightGrip floor

**i Weight optimisation:**

Anti-slip coating, with cross beams laid in foam that are made of aluminium instead of steel.

## EQUIPMENT



Scuff plate 300/450 mm



Liftgate with top tailgate (different manufacturers)



Liftgate in front of the tailgate (different manufacturers)



Side doors with step



Rubber buffer



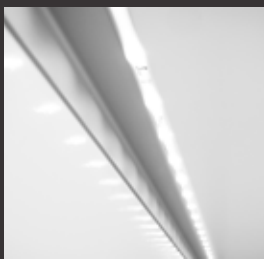
Slotted tie-rail with locking bar



Barred tie-rail



Airline rail



LED strips in the interior



Roof spoiler

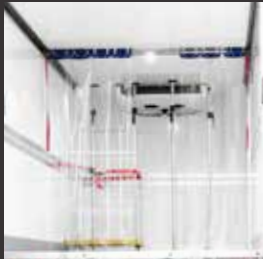


Monitor for the reversing camera in the cab + third brake light with integrated reversing camera



Ceiling rail

In addition to the **extensive standard equipment** for our trailers and vehicle bodies, we offer a **wide selection of accessories to suit each model**. This means that you can configure just the right solution for your transport needs according to your **individual requirements** and you can grow alongside your transport requirements.



1/2/3-piece cold curtain



3-piece insulating curtain



Multi-chamber systems (as an example)  
Other versions available on request



Side impact protection



Locking bar

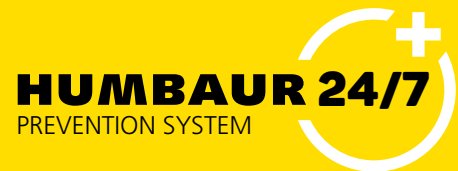


### Cooling units from different manufacturers

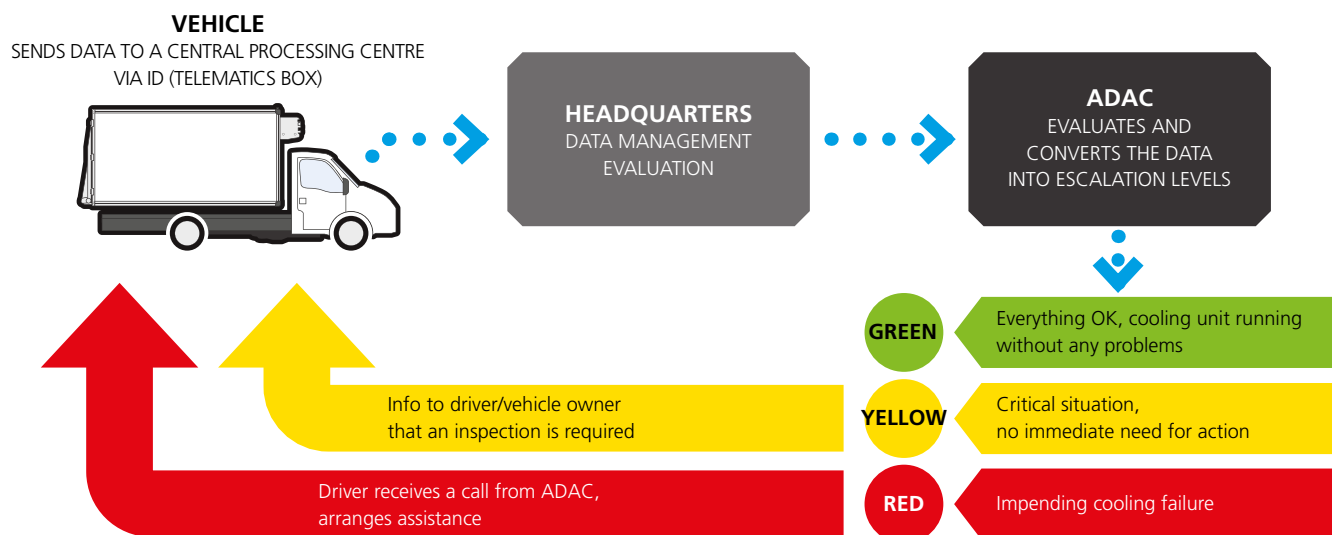
We select a suitable variant for your vehicle body from a wide range of refrigeration units from well-known manufacturers.

## HUMBAUR 24/7 PREVENTION SYSTEM

- Increase efficiency: Avoid long vehicle downtimes — quickly back in action. Notifications about critical situations allow workshop visits to be scheduled.
- Increase in capacity: Employee capacity freed up by outsourcing technical data monitoring
- Cost savings: Prevent breakdowns and high follow-up costs, as well as reduce wear and maintenance costs



## HUMBAUR 24/7 PREVENTION SYSTEM – HOW IT WORKS







More information is  
available online at

[humbaur.com/en/dealersservice/downloads/](https://humbaur.com/en/dealersservice/downloads/)

Your Humbaur contact in your area

Do you have any questions about this product?  
We look forward to hearing from you.

Contact Humbaur:

Contact us by phone on **+49 (0)821 24 929 - 957**  
or by email at **flexbox@humbaur.com**

\* Illustrations are similar. Our general terms of delivery and payment, which can be viewed at <https://www.humbaur.com/en/general-conditions-and-terms/>, apply. These apply only to Germany. Subject to change without notice. Errors excepted. All information is provided without guarantee.  
Images: Humbaur GmbH, Adobe Stock,  
Article 009.00026/Last updated 01/20